

State of Wyoming Corner Record

(in compliance with the CORNER PERPETUATION AND FILING ACT, Wyoming Statutes, 1997, Section 33-29-140, et. seq. and the Rules and Regulations of the Board of Registration for Professional Engineers and Professional Land Surveyors)

Reverse side of this form may be used if more space is needed.

Record of original survey and citation of source of historical information (if corner is lost or obliterated). Description of corner monumentation evidence found and/or monument and accessories established to perpetuate the location of this corner. Sketch of relative location of monument, accessories, and reference points with course and distance to adjacent corner(s) (if determined in this survey). Method and rationale for reestablishment of lost or obliterated corner.

FOUND: FOUND A GRANITE BOULDER WELL SET AND MARKED SOUTHEAST OF FENCE CORNER. STONE MEASURES 0.9' (N-S) X 0.8' (E-W) AND IS 0.7' ABOVE GROUND.

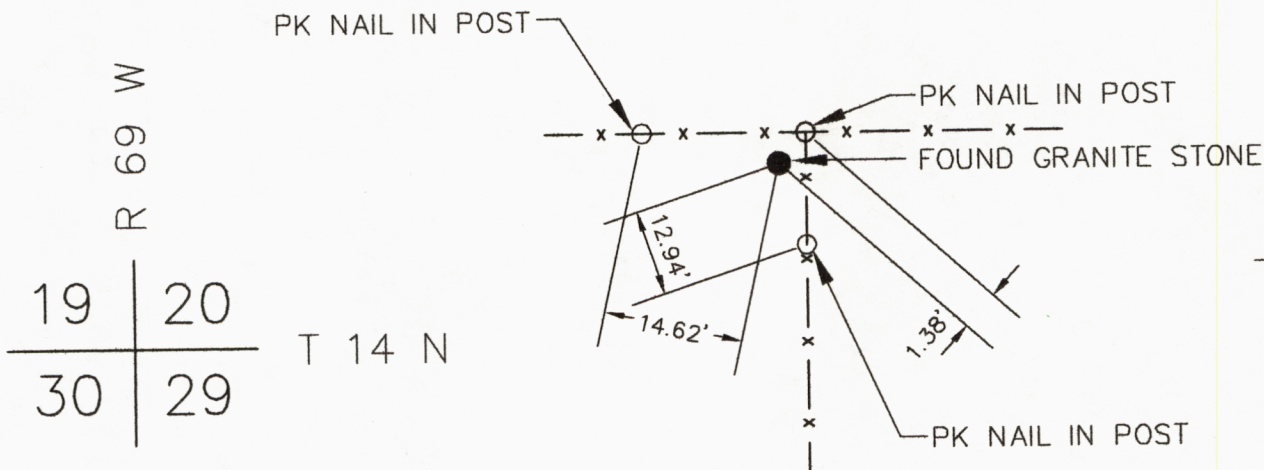
G.L.O. RECORD: UNKNOWN

SET: NOTHING SET

REFERENCES: SEE BELOW

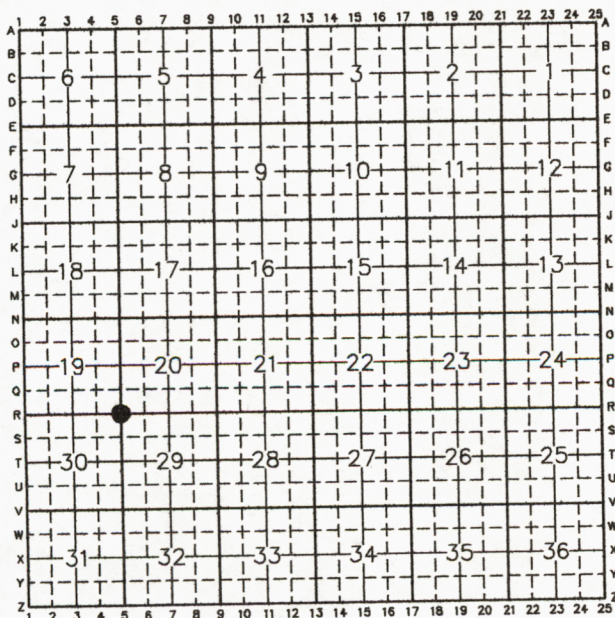


MARKED STONE



Date of Field Work: 4/2001 Office Reference: 2-2237.00

CROSS INDEX DIAGRAM



Firm/Agency, Address

James D. Voeller, P.E & P.L.S.

A.V.I., p.c.

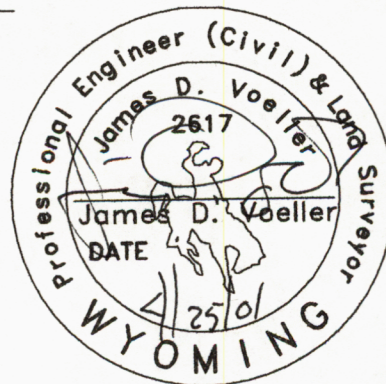
2035 Westland Road

Cheyenne, WY 82001

Telephone Number: (307) 637-6017

This corner record was prepared by me or under my direction and supervision.

SEAL & SIGNATURE



Corner Name: SECTION CORNER Section: 30/29 T 14 R 69 ; 6th P.M. Cross-Index No.: R-5
SARPFPI S/PI SW-March 1994



RECORDED 4/25/2001 AT 3:09 PM REC# 293564 BK# 1587 PG# 1599
DEBRA K. LATHROP, CLERK OF LARAMIE COUNTY, WY PAGE 1 OF 1